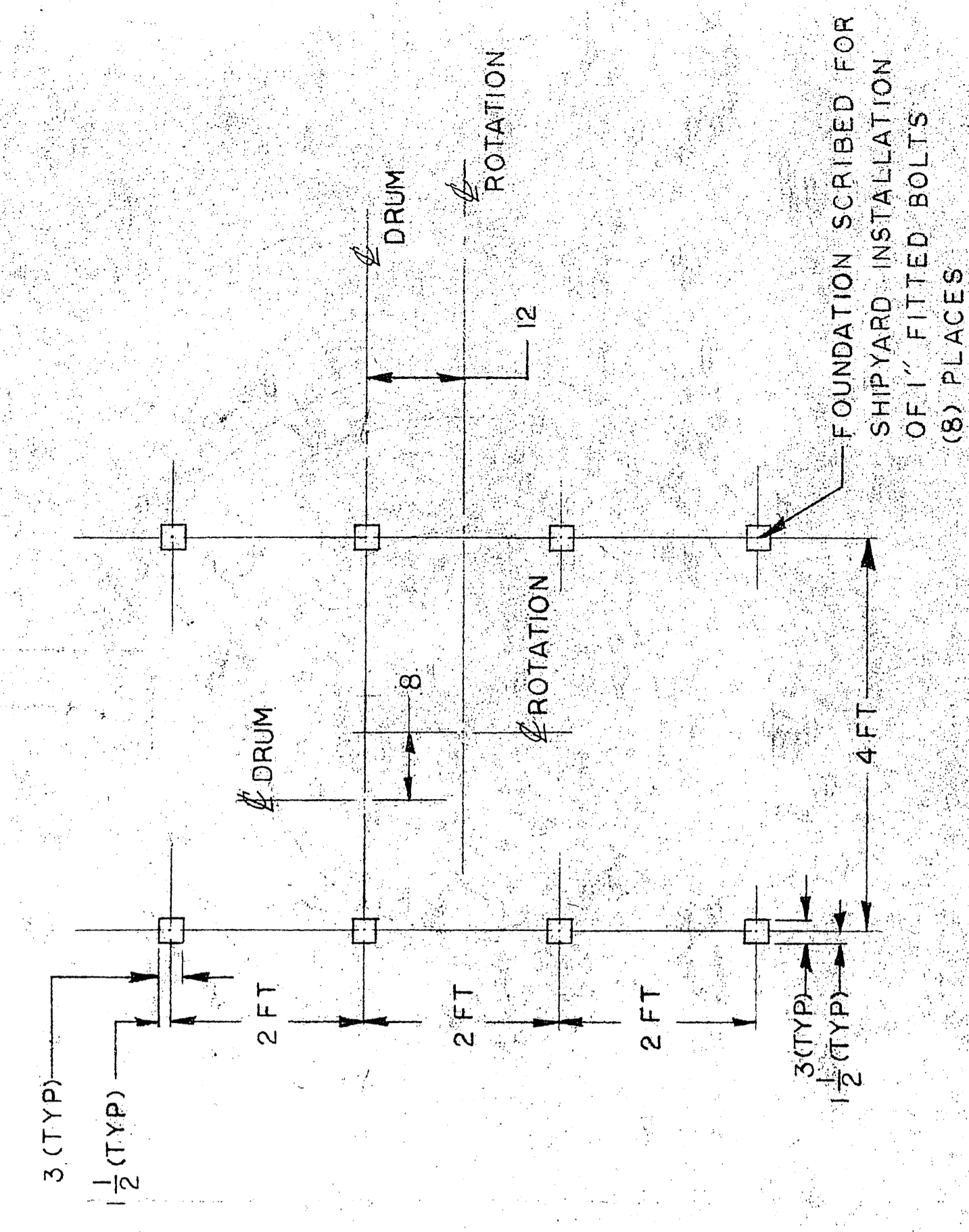
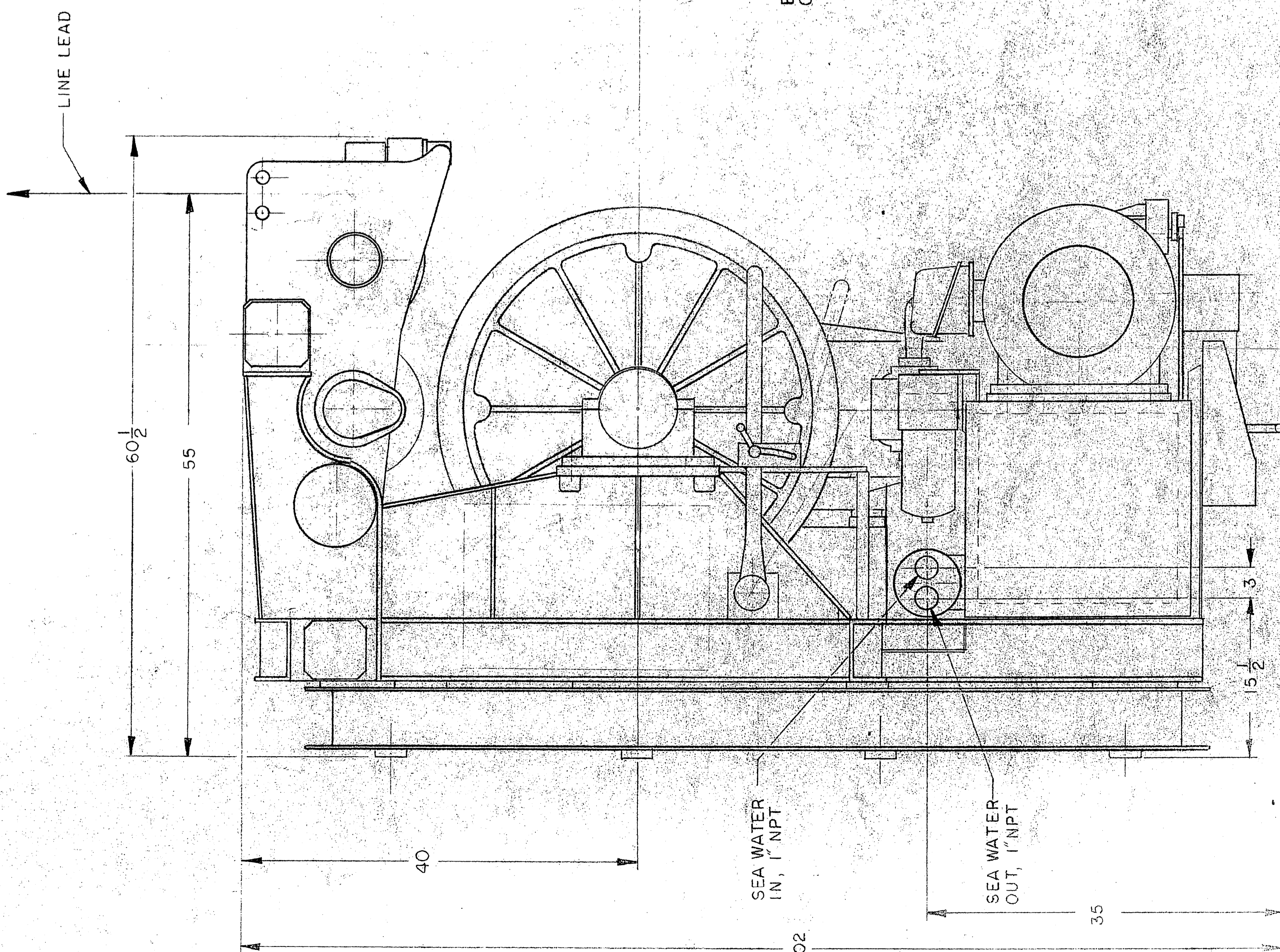


REVISIONS		
LTR	ZONE ITEM	DATE BY



**BOLTING PLAN**  
SCALE: 3/4" = 1'

**SPECIFICATIONS:**

- DRUM CAPACITY: 30,000 FT. OF 1/4" DIA ROPE
- LINE PULL AND SPEED: 3500 LBS AT 500 FPM AT FIRST LAYER OF ROPE
- LIGHT LINE SPEED: 600 FPM AT FIRST LAYER OF ROPE
- POWER: ELECTRO-HYDRAULIC
- MOTOR: 75 HP, 440V, 3 PHASE, 60 HZ.
- SEA WATER REQUIRED FOR HEAT EXCHANGER: 35 GPM AT MAX. TEMP. OF 85° F.
- HYDRAULIC RESERVOIR CAPACITY: 55 GAL.
- WEIGHT: WET DRY

GYRE-0081

ITEM NO.	RECD CITY	CODE IDENT NO.	DRAWING NUMBER	PART OR IDENTIFYING NUMBER	NOMENCLATURE OR DESCRIPTION	MATERIAL	EQUIVALENT COPY OR ALL SPECIFICATIONS	PURCHASE INFO

CONTRACT OR PROJECT NO. 55003-03

UNLESS OTHERWISE SPECIFIED DIMENSIONS ARE IN INCHES TOLERANCES ON: FRACTIONS DECIMALS ANGLES

DRAWN BY: [Signature] CHECKED BY: [Signature] DATE: [Date]

WINDING MODEL 3353 E-HLOW GENERAL ARRANGEMENT